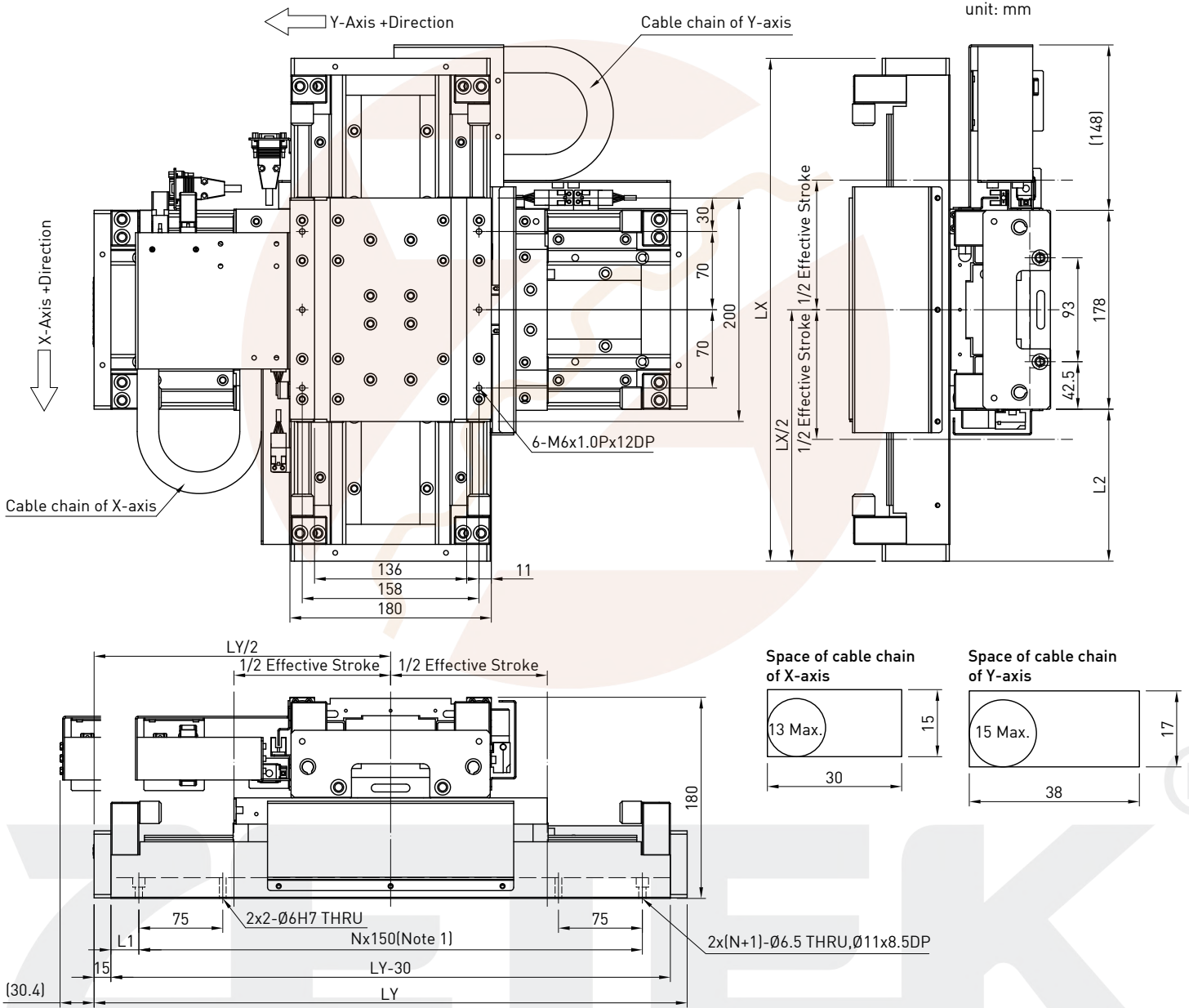


# Positioning Systems

## Linear Motor Stages

Dimensions and weight of cross stage LMX2L-S23S27-xxx-yyy-G20 without cover



Dimensions and weight of cross stage LMX2L-S23S27-xxx-yyy-G20 without cover

Stroke [mm]		Total length [mm]		L1	L2	N	Mass of Slider of X-axis [kg]	Mass of Slider of Y-axis [kg]	Total weight of cross table [kg]
X-axis	Y-axis	LX	LY	[mm]	[mm]				
100	100	450	530	25	136	1(Note 1)	7.5	22	48
100	200	450	630	75	136	3		22	50
200	200	550	630	75	186	3		24	52
100	300	450	730	50	136	4		22	52
200	300	550	730	50	186	4		24	54
300	300	650	730	50	236	4		26	56
100	400	450	830	25	136	5		22	54
200	400	550	830	25	186	5		24	56
300	400	650	830	25	236	5		26	58

Note 1: When stroke is 100x100mm, the pitch change to 300 mm